

Environmental Objectives and Targets

April 6, 2016

Dorothy Sperry
Environmental Performance Manager



PDX COMMUNITY ADVISORY COMMITTEE

CHARTING A COURSE FOR PDX

Presentation Overview

- Sustainability and environmental performance
- The Ports EMS – what it is
 - where and how objectives and targets fit
- Port environmental program objectives
- Airport Futures sustainability
- Setting objectives and targets – the process
- Discussion questions

Handouts:

- Proposed Objectives and Targets 2016/17
- EMS Program Activity Highlights



Triple Bottom Line and Environmental Performance



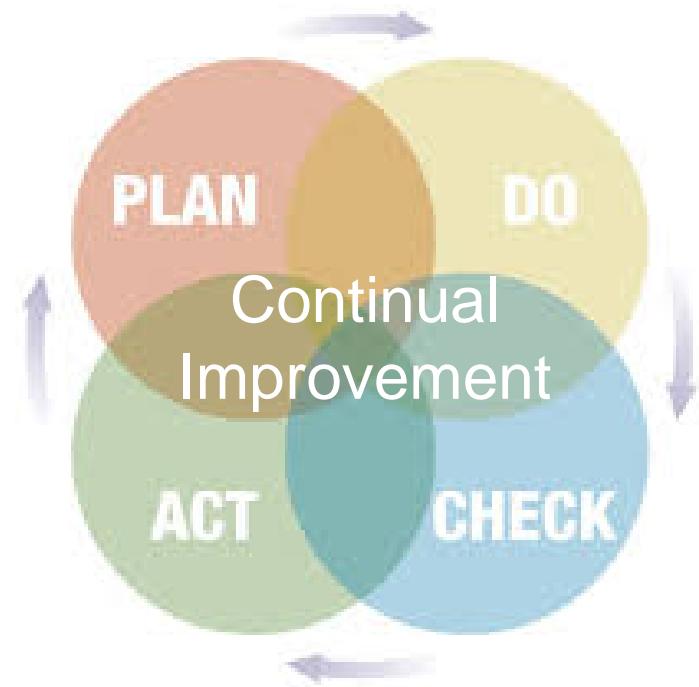
**ENVIRONMENTAL
PERFORMANCE**



Setting Objectives and Targets is part of the Ports Environmental Management System

The EMS is a systematic approach for:

- Controlling impacts
- Managing risk
- Improving performance



Objectives and Targets are part of EMS planning

- Address risks and opportunities
 - environmental impacts
 - compliance obligations
 - includes voluntary commitments
 - Plan actions
- Set environmental objectives
 - establish objectives for all relevant areas
 - create plans (targets) to achieve objectives and evaluate results

Port Environmental Programs and Objectives

Water Resources

- Minimize impacts to water resources

Natural Resources

- Minimize impacts and seek opportunities to enhance natural resources

Energy Management

- Reduce energy consumption and carbon emissions

Air Quality

- Minimize impacts to air quality

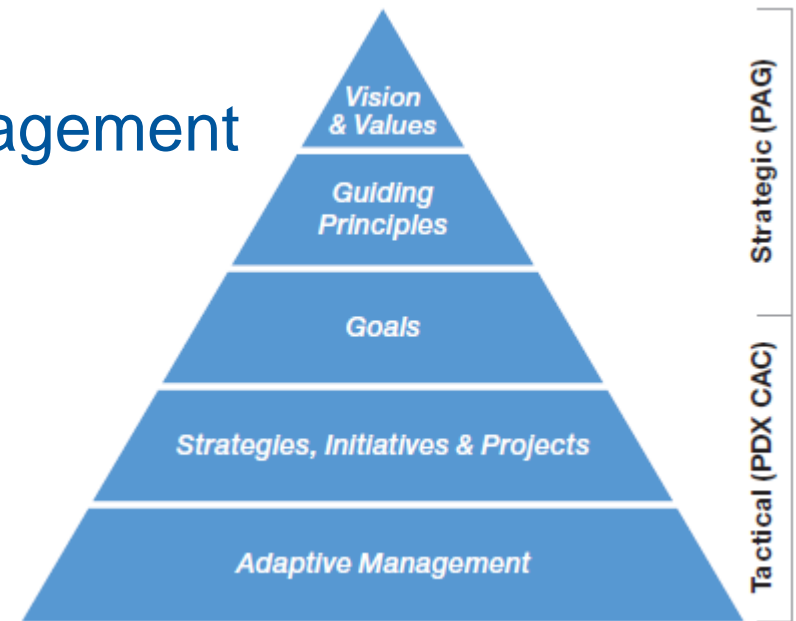
Waste Minimization

- Reduce waste generation and hazardous material use



Objectives and Targets support Airport Futures Sustainability

- Vision and Values
- Guiding Principles
- Hierarchy and Adaptive Management
 - Understand
 - Evaluate
 - Implement
 - Monitor



Setting and Evaluating Objectives and Targets is a formal, collaborative process

- Alignment with the budget process
- Program teams propose targets based on:
 - program goals and priorities
 - strategic and business plans
 - input from employees and community
- Executive Team approval
- Implementation
- Annual report to Executive Team and Port Commission



Discussion Questions

- Questions for clarification?
- Recommendations?
- Suggestions on other ways to engage community partners?

